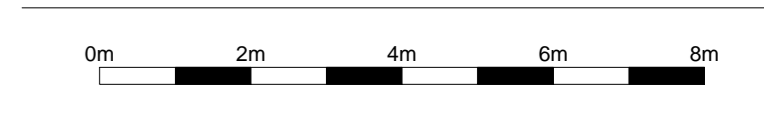
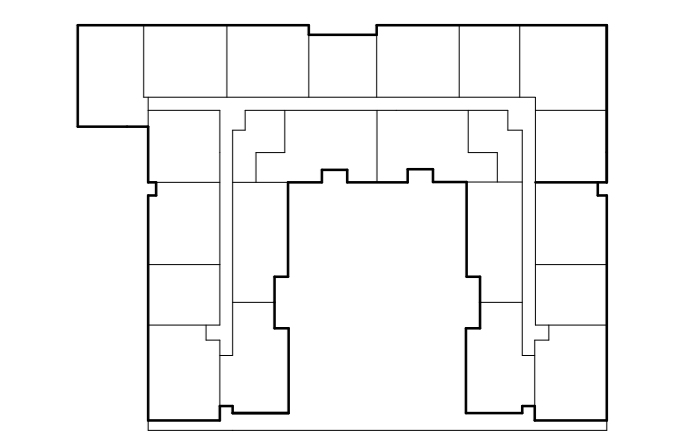
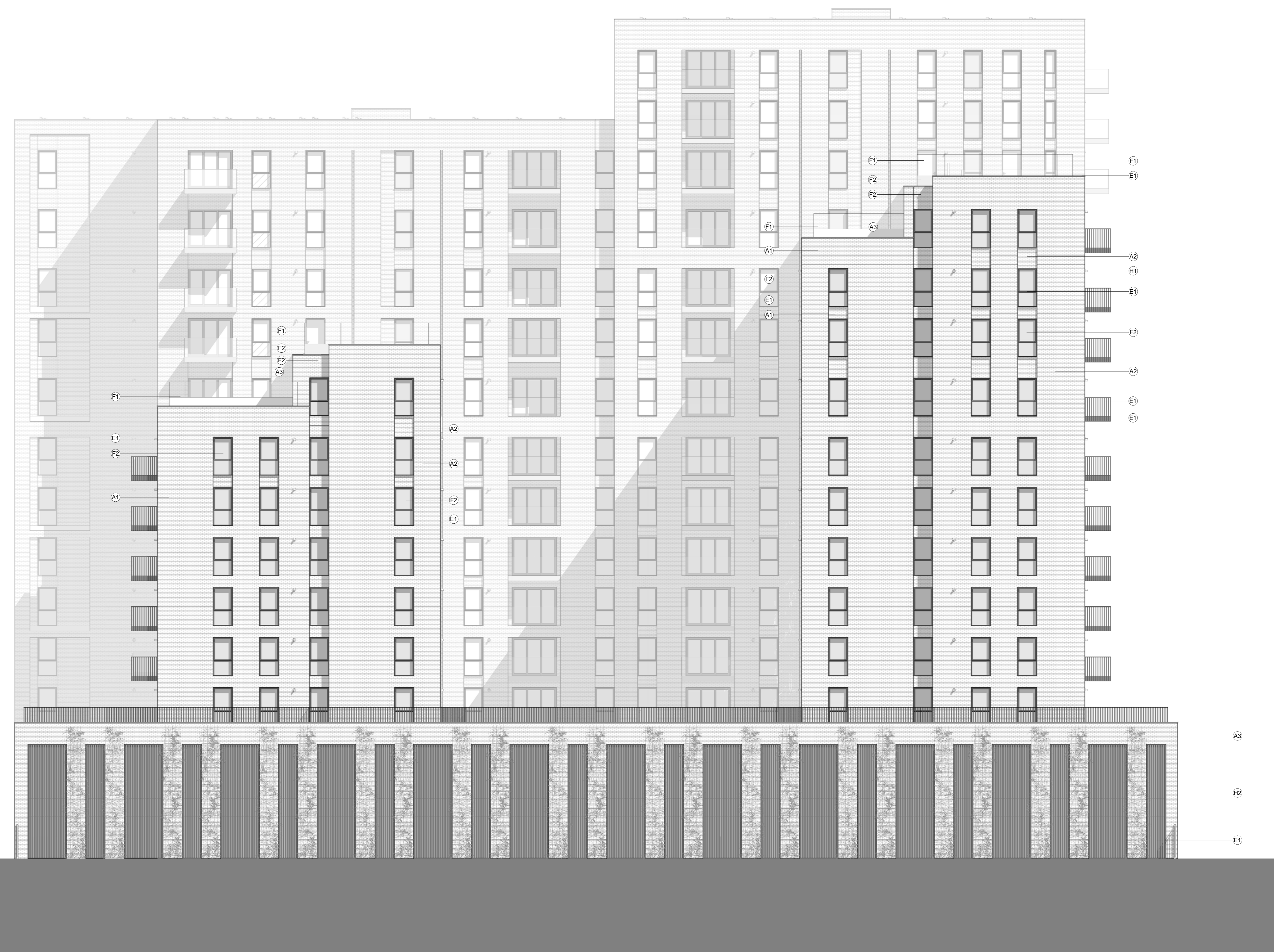


The contractor is responsible for checking dimensions, tolerances and references. Any discrepancy to be verified with the Architect before proceeding with the works. Where an item is covered by drawings to different scales the larger scale drawing is to be worked to.  
 Do not scale drawing. Figured dimensions to be worked to in all cases.  
 CDM REGULATIONS 2015. All current drawings and specifications for the project must be read in conjunction with the Designer's Hazard and Environment Assessment Record.  
 All intellectual property rights reserved.



| Materials key |                           |
|---------------|---------------------------|
| Key Value     | Keynote Text              |
| A1            | Red Brick                 |
| A2            | Grey/Brown Brick          |
| A3            | Black Brick               |
| E1            | Dark Grey Metalwork       |
| F1            | Clear Glazing             |
| F2            | Frosted Glazing           |
| H1            | Gas Flue (Black)          |
| H2            | Green Wall Trellis System |



| Rev | Date     | Description                                      | Drawn | Checked |
|-----|----------|--|-------|---------|
| A   | 13/11/18 | Scheme amended in response to Daylight Analysis. | AL    | IC      |
| -   | 14/05/18 | Final Issue for Planning                         | AL    | IC      |

**Victoria Avenue**  
West Elevation

**AA7218-2222** **REV A**  
For Planning  
 Drawn: AL Checked: IC Date: MAY 2018 Scale: @ A0 1:100